



# PIÑALTO

BOQUETE - PANAMÁ

Enjoy  
the fresh air  
of the  
highlands...





*\*Inspirational reference Images. May vary in design*



*\*Inspirational reference images. May vary in design.*

## THE PROJECT

### Stay in Boquete, Land of Flowers and Coffee

---

Pinoalto is located in the mountains of Boquete, a small town in the highland province of Chiriquí in Panama, next to a river canyon on one side and an equestrian club on the other.





# BOQUETE COUNTRY CLUB



Phase A

## PROJECT DETAILS

Aiming to expand the tourism infrastructure in Boquete and the market opportunity that was identified in the sector, Empresas Bern will develop Pinoalto Condo Suites.

This cozy mountain project is composed of various sized Condo Suites and multiple resort-style social areas focused on leisure and community.

**Pinoalto will be developed in phases.**



*\*Inspirational reference images. May vary in design.*







PHASE B2

PHASE B1

PHASE A

*\*Inspirational reference images. May vary in design.*

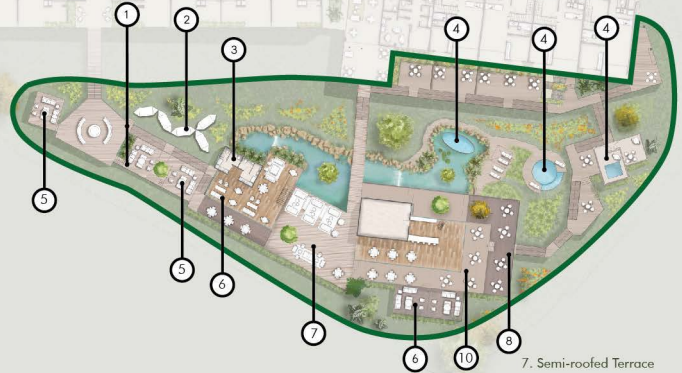


# PROJECT





## SOCIAL AREA: RESTAURANT, TERRACES, READING AND COFFEE ROOM, FIREPIT AREA, POOLS, AND LOOKOUT DECKS



1. Wheelchair-Accessible Firepits

2. Hammock Area

3. Public Restrooms

4. Pool and Jacuzzi

5. Firepits

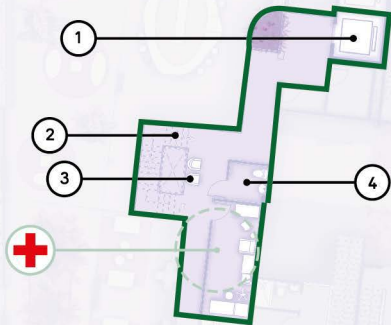
6. Reading and Coffee Room

7. Semi-roofed Terrace

8. Terrace

9. Lookout Area

10. Restaurant with Terrace



1. Elevator Access

2. Access by Stairs

3. Waiting Area

4. Bathroom





Phase A  
Level 000

7 units / level  
● 145 sqm





# Phase A Level 100

9 units / level

- 5 ● 95 sqm
- 1 ● 98 sqm
- 2 ● 100 sqm
- 1 ● 107 sqm



View towards  
B.C.C.

A201  
95 sqm

A202  
95 sqm

A203  
95 sqm

A204  
98 sqm

A205  
95 sqm

A206  
95 sqm

A207  
95 sqm

A208  
95 sqm

A209  
107 sqm

View towards the  
canyon

## Phase A Level 200

9 units /level

- 1 ● 98 sqm
- 1 ● 107 sqm
- 7 ● 95 sqm



Phase A  
Level 300

- 9 units /level
- 1 ● 98 sqm
  - 1 ● 107 sqm
  - 7 ● 95 sqm



# DISTRIBUTION 95 SQM

Typical Floor Plan – Condo Suite Unit

Phase A



Country Club



Level 100

Country Club



Level 200

Country Club



Level 300

Bedrooms: 2

Bathrooms: 2

Number of 95 sqm units: 19



## Typical Floor Plan – Condo Suite Unit



Ground Floor



Mezzanine

Country Club



Greenery view

Level 000 (Ground Floor)

Bedrooms: 3

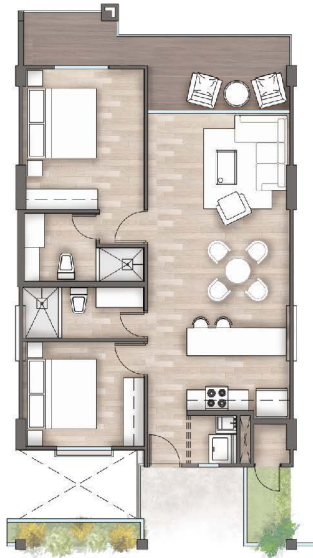
Bathrooms: 2

Number of 145 sqm units: 7

# DISTRIBUTION 100 SQM

Phase A

Typical Floor Plan – Condo Suite Unit



Country Club



Greenery View

Level 000 (Ground Floor)

Bedrooms: 2

Bathrooms: 2

Number of 100 sqm units: 2

## NATURAL VENTILATION AND SHADING

Strategies for maximizing comfort in tropical climates



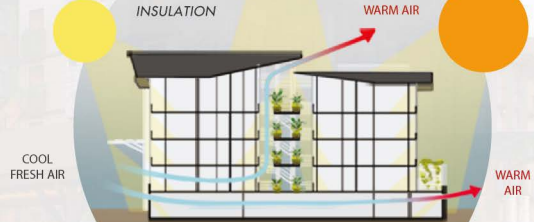
The building's orientation and shape allow for wind to enter all Condo Suites and common areas. Open hallways promote airflow across the building, so that every unit has the possibility of cross-ventilation with air coming in or out, "either through" the building's façade or the main hallway. At the same time, multi-story open spaces allow for vertical air flow, helping to get rid of warm air during the hottest hours of the day.

Naturally - Ventilated Parkings

Awnings - Solar Control

MORNING SUNLIGHT

AFTERNOON SUNLIGHT



Balconies - Solar Control

Indoor Garden

Pergolas

# YOUR TURN-KEY CONDO SUITE



## 1. Bedrooms:

Bed  
Fixed Nightstands  
and Furniture  
Closets  
Curtains  
Lamps

## 2. Bathrooms:

Bathroom Fixtures and  
Furniture  
Lamps

## 3. Kitchenette:

Kitchen Appliances  
Lamps

## 4. Living room:

Sofa  
TV Furniture  
Curtains  
Lamps

## 5. Dining Area:

Dining table with chairs  
TV Furniture  
Kitchen Stools  
Lamps

## 6. Laundry Area:

Washer/Dryer Unit  
Laundry Sink  
Lamps





*\*Inspirational reference images. May vary in design.*



Costa del Este, Sala de Ventas | +507 214.2376  
empresasbern.com | info@empresasbern.com

The images contain an artistic representation of the project. The developer reserves the right to make changes without prior notice.  
Las imágenes contienen una representación artística del proyecto. El desarrollador se reserva el derecho de realizar cambios sin previo aviso.